



Blaise Primary & Nursery School Newsletter - End of Term 1 2023

Latest News

latest news

- **Message from Mr Bonaddio & Mrs Barlow**
- **School Council Update**
- **Winter Wonderland Disco**
- **Author Visit**
- **Special Visitor**

- **A Week in the life of Year 1**
- **Breaktime Snack**
- **SEN Nurturing Course Information**
- **Keeping children safe online**
- **Novus Afterschool Club Booking**
- **Minecraft Club**
- **Pop Up's for Parent/Carers**
- **Bristol City Council Survey**
- **Parking**
- **PTA News and Events**
- **Breakfast**
- **School Uniform**
- **Pupil premium**
- **Sign up for Nursery Places September 23/24**
- **Term Date/INSET dates**
- **Safeguarding**
- **Contact Us**

Message from Mr Bonaddio Mrs Barlow



What an incredible term we have had!

A huge thank you to all of the families who joined us for our festive sing a long; it was a lovely way to end the term.

We have spent lots of time in class this term and been so impressed with your children. Their engagement, enthusiasm and joy in their learning is evident!

Thank you to our incredible staff team who ensure that your children continue to thrive at school.

Have a wonderful break and enjoy the festivities.

We look forward to seeing you on Wednesday 3rd January.

Children enjoy sharing their learning with adults throughout the school.



School Council Update



Hi my name is Julia and I am from Year 6. I enjoy being a school councillor and being the voice of my class. As a school councillor you are set tasks by Mrs Barlow our deputy headteacher. For instance, so far we have discussed how to improve lunchtimes, our red bus and children's safety. Meetings are held on our red bus to discuss the ideas you and your class have made. You will also get a golden badge to wear so that everyone know you are a school councillor member.

We were treated to a great performance today by all the teachers!



Winter Wonderland Disco



We would like to thank the PTA for all their hard work this term. They have raised an amazing £400.82 A great time was had by all at the recent Winter Wonderland Disco. Lots of children were dancing the night away and some parents too!





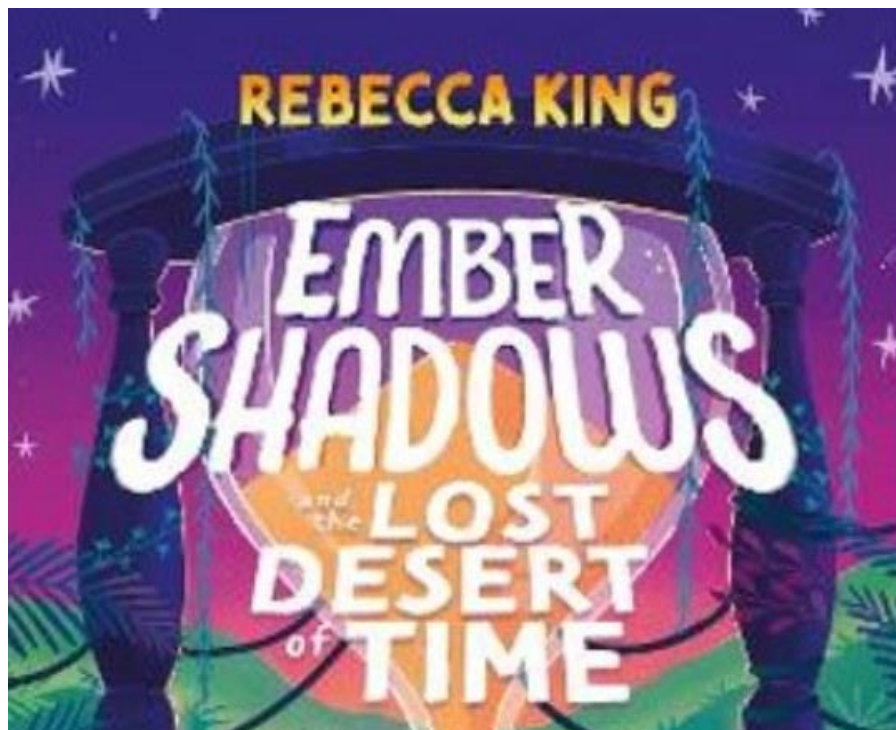
Entering and exiting the school at drop off and pickup

From January 2024 if you have children in EYFS/KS1 and children in KS2 you are able to walk through the office foyer to access both key stages. Please note these exits/entrance will be shut at 8:50am and open at 3:15pm.





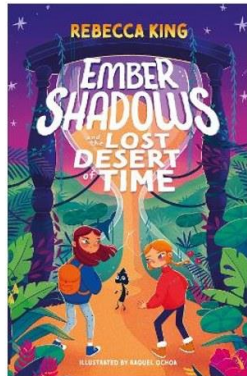
Author Visit



We were delighted to welcome author Rebecca King to Blaise to talk with Years 4, 5 and 6 about the books she has written and what it is like to be an author. The children really enjoyed her presentation, and had lots of questions to ask her, such as, 'What is your favourite book to read?' and 'What did you spend the money you earned from your first book on?' If you would like to buy a copy of the book

for your child, we have a discounted price of £6.79 from Max Minerva's book shop in Henleaze, using the link below.

[Buy The Ember Shadows and the Lost Desert of Time](#)



Special Visitor



We had a very special visitor to do a boxing activity with children last week. The children were fantastic, followed instructions brilliantly and were eager to learn!









Year 3 Tea Party

This term, Year 3 have been learning about Monarchs, specifically the 3 King Charles'. We have been using our historical knowledge and skills to put events in a timeline, study the use of royal portraits, and how the powers of Kings have changed over time. To wrap up our learning this term, Year 3 had a 'Royal Tea Party'. We dressed up as Kings and Queens; ate cake and drank tea! We reflected on our learning of King Charles I, II and III to engage in some drama and act out the personalities of these righteous royals. We also created our own Afternoon Tea menus and learnt all about royal etiquette and Monarchs position in society!





A Week in the life of Year 1



Breaktime Snack



Infants are supplied with a piece of fruit daily from school to eat at breaktime. Juniors are allowed to bring in their own **healthy snack**. We have seen several children eating chocolate and crisps at breaktime which is not in line with our policy. Many children are also going to their packed lunchbox to retrieve their snack which we are hoping is meant for breaktime and is not part of their lunch, you may wish to check with them in case they need an extra snack provided for them. For this reason please can we request breaktime snacks are kept separate from their lunch boxes. Thank you

SEN Nurturing Course Information



MURMURATION COMMUNITY THERAPY



New SEND Parent Carer Nurture Groups

Starting January 2024: 8 sessions to build emotional wellbeing and friendship amongst a small group of SEND parents.

Brislington - Tuesdays - 1-2:30pm
Broomhill Children's Centre, Fermaine Ave, Brislington, BS4 4UY

Upper Horfield - Wednesdays 10.30am - 12noon
Upper Horfield Children's Centre, 34 Sheridan Rd, Horfield, BS7 0PU

Eastville - Wednesdays 8 - 9.30pm
Nissen Hut, Eastville Park, Fishponds Rd, Eastville, BS5 6XA

Places are free, we welcome donations.

FOR MORE INFO AND TO BOOK VISIT
[MURMURATIONCOMMUNITYTHERAPY.COM](https://murmurationcommunitytherapy.com)

  MURMURATIONCOMMUNITYTHERAPY

Keeping children safe online

It's Christmas Time – Parents guide to help keep children safe online

It's Christmas Time!

A Parent's Guide to Social Media

A Parent's Guide to Sharing Pictures

A Parent's Guide to Gaming

A Parent's Guide to Online Grooming

scan the QR code with your phone's camera to see the guides on our website

A Parent's Guide to Live Streaming

A Parent's Guide to Online Influencers

A Parent's Guide to Fake News

A Parent's Guide to Privacy Settings

It's always best to be prepared

Many parents may be planning to give electronic gadgets to their children this festive period. Our guide is designed to help parents take a realistic approach to help keep their children safe when using the internet, social media and playing online games.

Scan the QR code to find out more.

Online safety is when young people know who they can tell if they feel upset by something that has happened online.

Parents please contact your school to enquire attending their next e-safety workshop or have any concerns.

Working with Home Office 'PREVENT', The Police and Crime Commissioner and Children's Safeguarding Partnerships to help keep children safe online.

Skips Educational Email: info@skipssed.com Tel: +44 121 227 1941

Skips www.skipssafetynet.org

Developed in partnership with

Home Office
West Midlands
Violence
Reduction Unit
West Midlands
Police and Crime
Commissioner

Novus Afterschool Club Booking





NOVUS Teaching Limited
584 Wellsway
Bath
BA2 2UE

Tuesday 12th December 2023

NOVUS Development Clubs Update: Your Feedback Matters!

Dear Blaise Primary Parents & Carers,

We hope this letter finds you well. We want to express our sincere gratitude for your continued support and patience as we settle into our role as external specialists at Blaise Primary, focusing on Sports, Music, and Forest School.

Your feedback is invaluable to us, and following a meeting with the school SLT we have carefully considered your comments regarding our Development clubs at the school.

In response to your concerns about the diversity of options in our Sports club, we are pleased to announce that we will be **continuing Gymnastics Club on Thursdays**, replacing the proposed Basketball club. From Term 4, we will be introducing a much-desired Dodgeball club and believe these changes will provide a more inclusive and enjoyable experience for all the children.

This is in addition to the following steps already taken to make booking our clubs an accessible and simple process:

- **New booking system on the NOVUS website, with individual accounts that include booking history and communication's**
- **Termly bookings instead of Two Term blocks reducing outlay for initial bookings**
- **Ensuring prices are frozen at the current rate for 23/24 school year**

NOVUS Teaching Limited
Tel: 0117 259 1230
Registered in England Company No. 6140138
VAT: 938 2760 94



TERM 3 FEEDBACK FORM

We appreciate your active involvement and the constructive feedback we have received and to ensure we continue to address your needs and preferences, we will be sending out feedback forms in Term 3 to all parents via the school. Your insights will play a crucial role in shaping the future of our Afterschool provision.

To stay updated on the latest news, activities, and improvements, we encourage you to sign up for our Blaise mail list by clicking on the link below. This will ensure you receive timely updates and have the opportunity to stay actively involved in your child's extracurricular activities. <https://forms.office.com/r/WNrQMKVv4V>

Please also take a look at our Blog & News on the website - <https://novuseducation.co.uk/news/>

Once again, thank you for your support and constructive feedback. Our primary goal is the satisfaction of both parents and children, and we are dedicated to creating a positive and enriching environment for everyone involved.

If you have any further questions or concerns, please do not hesitate to reach out to us. We value your partnership and look forward to creating many more enjoyable moments with your children in our NOVUS Development Clubs and in our curricular lessons.

Many thanks

Alex Starkie
Managing Director
NOVUS
<https://www.novuseducation.co.uk>

NOVUS Teaching Limited
Tel: 0117 259 1230
Registered in England Company No. 6140138
VAT: 938 2760 94

Pop Ups for Parent/Carers in the new year please use code or contact information to sign up

POP UPS FOR PARENTS

Parents and Carers, join our Link Forward Team, with support and advice from North Star Outreach and North Bristol's Primary Mental Health Specialists.

At: Greenway Centre, BS10 5PY

**WEDNESDAY
10TH
JANUARY**

9:30 - 11am

Routines at
home - bedtime
and screen time!
Primary Children

**WEDNESDAY
21ST
FEBRUARY**

9:30 - 11am

Emotionally-
Based School
Avoidance -
Primary Children

**WEDNESDAY
28TH
FEBRUARY**

9:30 - 11am

The teenage
brain - how to
help young
people regulate



SCAN ME

Sign up using the QR code
Or get in touch with Jen



0117 950 3335



jenlister@southmead.org



Bristol City Council Survey



We have received a request for Parents/Carers to complete this survey from Bristol City Council:
[Survey \(savanta.com\)](https://www.savanta.com)

- The survey should only take approximately 10 minutes to complete.
- Your feedback is valuable and will be considered as part of the DfES's thinking going forward.
- Your responses are completely confidential, and all data is collected and processed in compliance with all data protection laws and the Market Research Society Professional Code of Conduct.
- You don't need to know anything about communications or advertising to respond.

Parking



Play your part in keeping the area outside our school safe

During last year several vehicles received a fixed penalty charge for parking or stopping outside our school and other local schools. Park Legal will be making regular appearances with foot patrols and camera cars this academic year to help ensure our community stays safer for all travelling to and from school.

The Highway code states:

Rule 238

You **MUST NOT** wait or park on yellow lines during the times of operation shown on nearby time plates (or zone entry signs if in a Controlled Parking Zone)

You **MUST NOT** wait or park, or stop to set down and pick up passengers, on school entrance markings when upright signs indicate a prohibition of stopping.

- No Stopping
- No Excuses
- Keeping our children safe


Please can we also ask that parents do not use the school car park to drop off if running late unless you have prior permission.



Join the PTA!



MANY HANDS MAKE LIGHT WORK



Blaise Primary School and Nursery PTA

What is the PTA?

Blaise Primary PTA is an organisation run by parents and carers who volunteer their time.

The aim of the PTA is to raise vital funds for the school, this is done by organising events, such as, discos, raffles and fayres.

Why join the PTA?

- **Support the school** - The PTA is vital in raising funds for the school
- **Totally flexible** - You can offer as much or as little time as you want
- **Create lasting memories** - Plan events that yours and others children will remember for years to come.
- **Because it's fun** - Work with and alongside others to bring fun events to the school

Roles within the PTA

Joining a school PTA can seem daunting and you may think it needs to be a big commitment, but it really doesn't. There is something to suit everyone.



Core Roles - This includes, chair, vice chair, treasurers and secretaries. These members deal with the finances and the main paperwork load. All core roles are currently full.

Committee Member - Come to regular meetings and share your thoughts and help organise events

Micro Volunteer - No need to come to meetings, you can simply help set up at our events when the time suits you and your family.

Interested / have questions

If your interested in joining the PTA or have some questions then please email us at pta@blaiseprimary.co.uk



Breakfast



Please ensure your child has breakfast at home each day. Breakfast is the most important meal of the day. Breakfast consumption in children has been found to:

- Improve cognitive function, particularly memory, attention, and executive function
- Improve academic performance
- Increase on-task behaviour in the class

School Uniform



We wish to remind parents about our school uniform policy. It is noticeable on PE days that some children are coming to school not in the correct PE kit. We have purposely chosen a uniform that is more affordable and is readily available from supermarkets. we have included the uniform list below. Football shirts are not an acceptable top on PE days. Please can you check that all school uniform is labelled .

The children **should not** be wearing jewellery to school, including bracelets and necklaces. Stud earrings are permitted, no dangly or hooped earrings as these could get caught when the children are running around in the playground or during PE lessons. Earrings need to be removed or taped and long hair tied back for PE, tape is to be brought in from home.

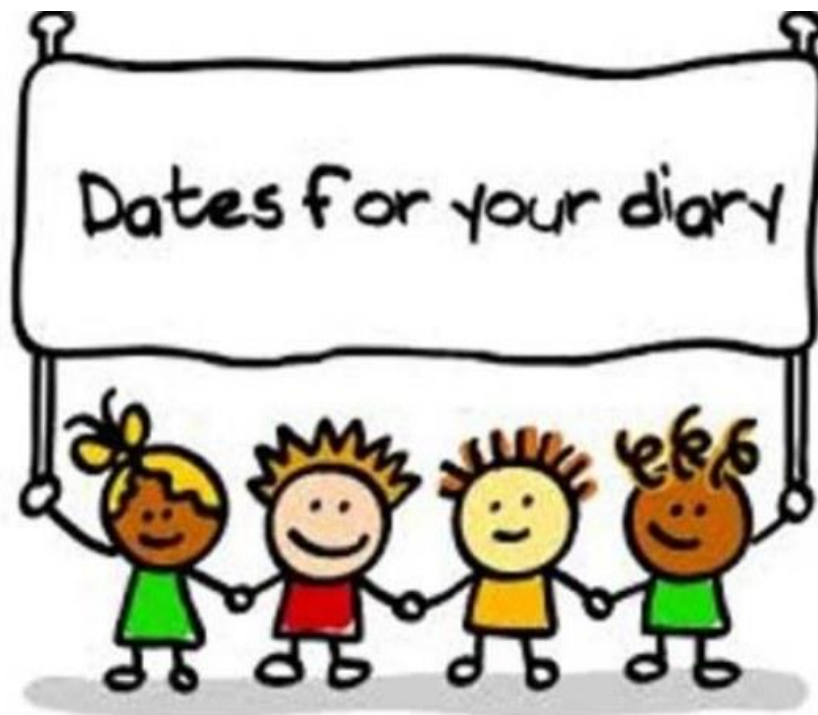
- Dark grey trousers, skirt or pinafore dress
- Blue polo shirt
- Navy sweatshirt, cardigan or fleece

- Black shoes or trainers
- In the summer terms, tailored shorts and Blue checked summer dresses may be worn.

PE Kit

- Plain Navy/ black shorts, jogging bottoms or leggings
- Plain white t-shirt (no football shirts)
- Navy/Black sweatshirt or hoodie

Diary Dates



- 2-1-24 Inset day
- 3-1-24 First day of school for children

Please follow us on our [Blaise Facebook page](#)



Term Dates and INSET Dates 2023-2024



Term 1 Friday 1 September 2023 to Friday 20 October 2023

Term 2 Monday 30 October 2023 to Friday 15 December 2023

Term 3 Tuesday 2 January 2024 to Friday 9 February 2024

Term 4 Monday 19 February 2024 to Thursday 28 March 2024

Term 5 Monday 15 April 2024 to Friday 24 May 2024

Term 6 Monday 3 June 2024 to Tuesday 23 July 2024

INSET Dates

Day 4- 2nd January 2024

Day 5 - 12th July 2024

Please note that some INSET dates may change due to Circumstances beyond our control

Pupil Premium



If anyone believes that they may be entitled to claim, please contact the office for further details or follow this link to complete a simple form. It will entitle your child to Free School Meals as well as access to free school trips to name but a few.

<https://parent.bristol.gov.uk/web/portal/pages/fsmapplication#h1>

We are accepting Nursery Applications for 23-24



Please share this with anyone you know who will be looking for a nursery place from September 2023. We have a large classroom and a huge outdoor space. Our nursery is part of our school community and makes transition to school so much easier for children.

High quality early education and care within the heart of Blaise & Nursery primary School



We are now accepting applications for our nursery school places 2023-24

- Fully funded 30 hour childcare for working parents
- Qualified teaching staff who are dedicated, caring and experienced
 - Small class sizes
- Large spacious outdoor areas
- Varied activities following the EYFS curriculum

Continuity of skills & curriculum from nursery to reception year and beyond

Exciting & stimulating inside and outdoor areas

- Daily healthy snacks and milk provided
 - School lunch available
- Be part of a whole school community

For more information or to book a tour of our room and to meet our Nursery team please contact our school office on 0117 3772424

BLAISE PRIMARY & NURSERY SCHOOL



**Clavell Road, Henbury
Bristol BS10 7EJ**

www.blaise.bristol.sch.uk

Safeguarding



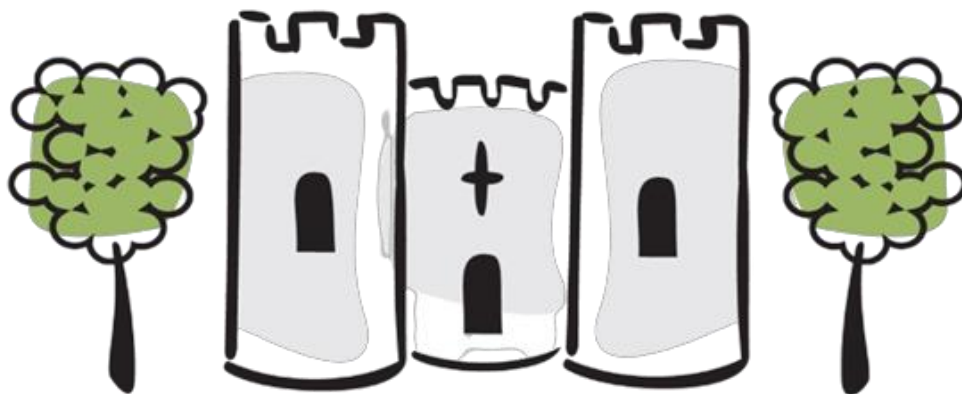
When the school closed, you may wonder who to contact if you have concerns about a child.

If you're concerned about the well-being of a child contact the First Response Team on 0117 903 6444

When our offices are closed call the **Emergency Duty Team on 01454 615 165.**

If the child is at immediate risk call the **Police on 999.**

Contact Us



Blaise Primary and Nursery School

Blaise Primary and Nursery School

Clavell Road, Henbury

Bristol

BS10 7EJ

0117 3772424

Email: school@blaiseprimaryandnursery.co.uk

Visit us on the web at [Blaise Primary & Nursery School Website](#)